

ECONOMIC IMPACT

KPI

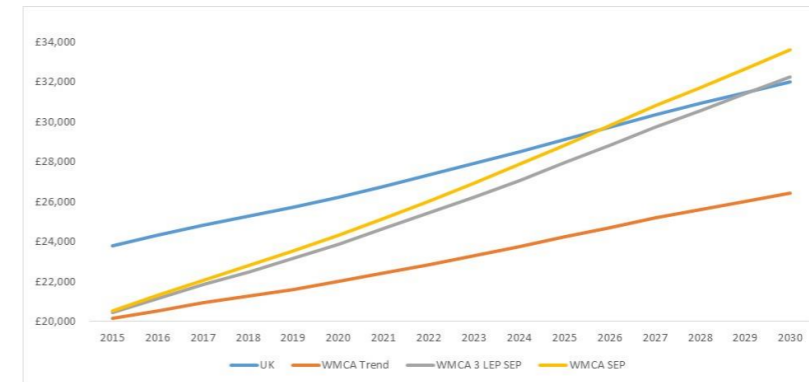
WMCA Baseline

WMCA Target

Progress

OUTPUT

KPI1. Improve GVA per head in line with National Average by 2026



Gap reduced by £710 per head since 2010



KPI2. Double Total GVA by 2030

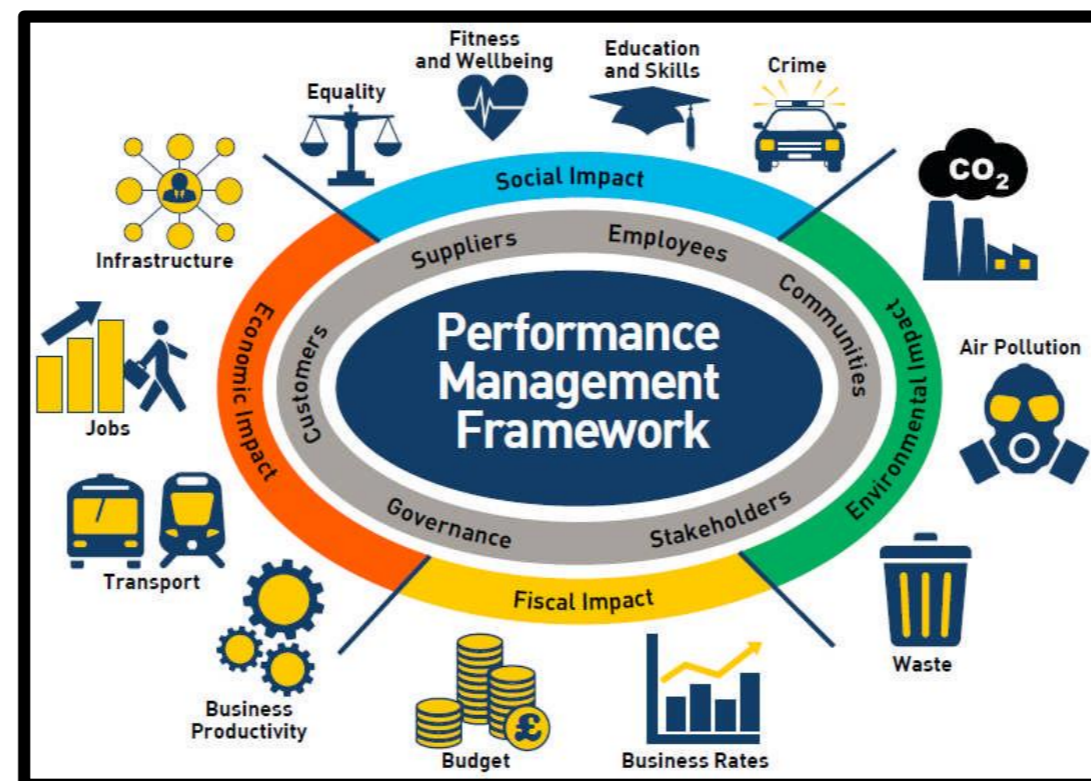
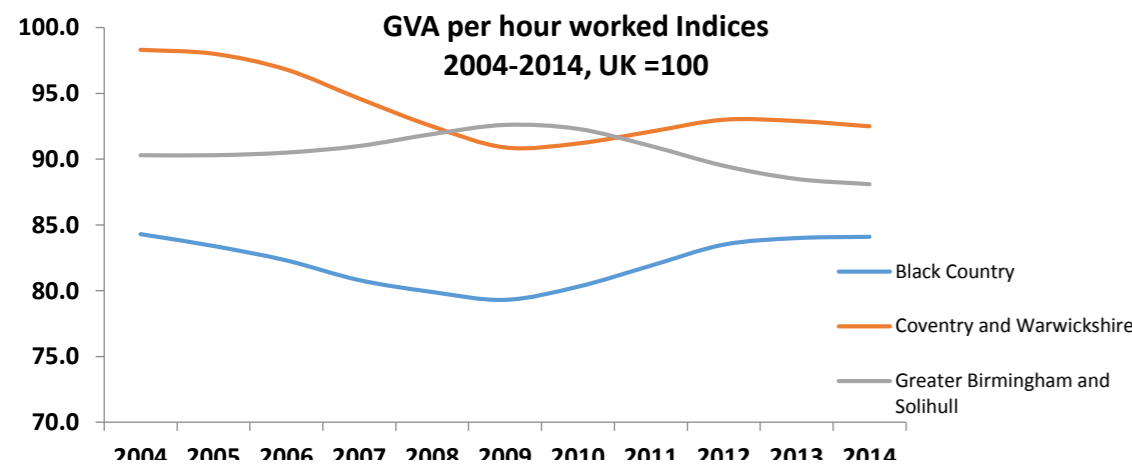
	Baseline GVA (2013) Oxford Economics
BCLEP	£19,217m
CWLEP	£18,866m
GBSLEP	£39,644m
WMCA	£77,277m

	GVA (2030)	Required annual growth
BCLEP	£35,970m	4%
CWLEP	£38,436m	4%
GBSLEP	£78,272m	4%
WMCA	£152,679m	4%

	Growth 2013-2014
BCLEP	2% ▲
CWLEP	3% ▲
GBSLEP	3% ▲
WMCA	3% ▲
UK	5%

GVA Source: Calculated by BC EIU September 2015 based on Oxford Economic Model Impact Scenario Tool - Scenario D2

Focusing on Increasing Productivity



ECONOMIC IMPACT

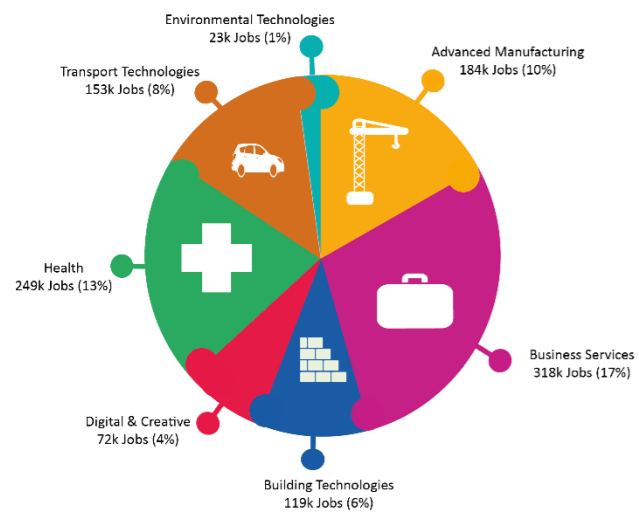
KPI

LABOUR MARKET

KPI3. Increase Jobs by .5m by 2030

Focusing on Transformational Sectors

Transformational Sectors (Based on 2013 Jobs)

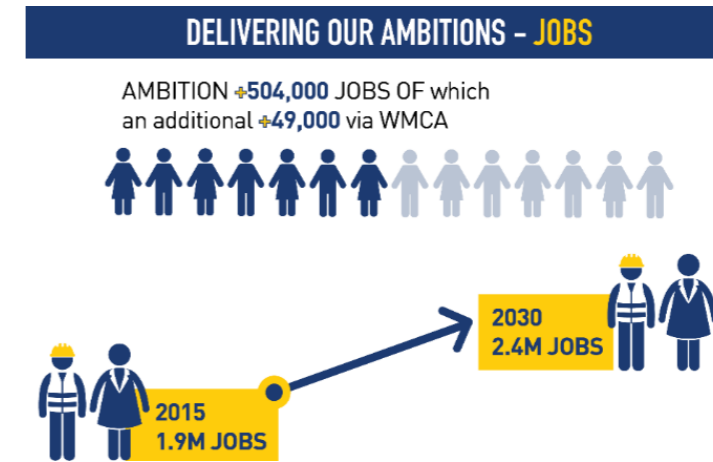


Source: Calculated by BC EIU September 2015 based on Oxford Economic Model Impact Scenario Tool - Scenario D2

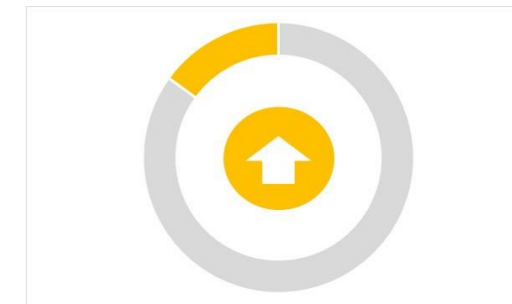
WMCA Baseline

Sector:	2013 (000's)	% total
Advanced Manufacturing and Engineering	184	10%
Business, Professional and Financial Services	318	17%
Construction (Building Technologies)	119	6%
Digital and Creative	72	4%
Life Sciences and Healthcare	249	13%
Logistics and Transport Technologies	153	8%
Low Carbon and Environmental Technologies	23	1%
Public Sector including Education	318	17%
Retail	316	17%
Cultural Economy including Sports	148	8%
Total WMCA	1,899	100%
BCLEP Total	495	
CWLEP Total	459	
GBSLEP Total	945	

WMCA Target



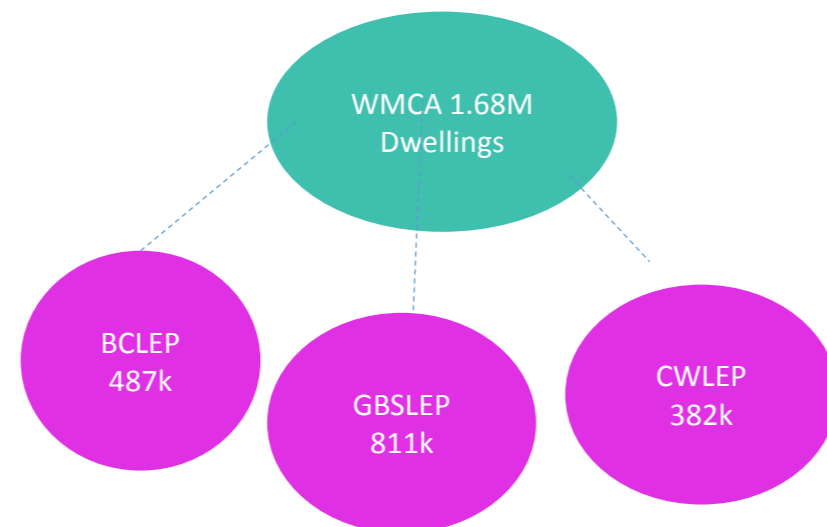
Progress



54k jobs since 2010 – 1% average annual increase

HOUSING

KPI4: Deliver High Quality Homes to 4.5 People



Area	Increase 2010-2015
BCLEP	12,650
CWLEP	11,760
GBSLEP	16,270
WMCA	40,680

Source: DCLG, Updated annually in April

SOCIAL IMPACT

KPI

WMCA Baseline

WMCA Target

Progress

SKILLS

KPI5. Employ 85k Apprenticeships by 2030

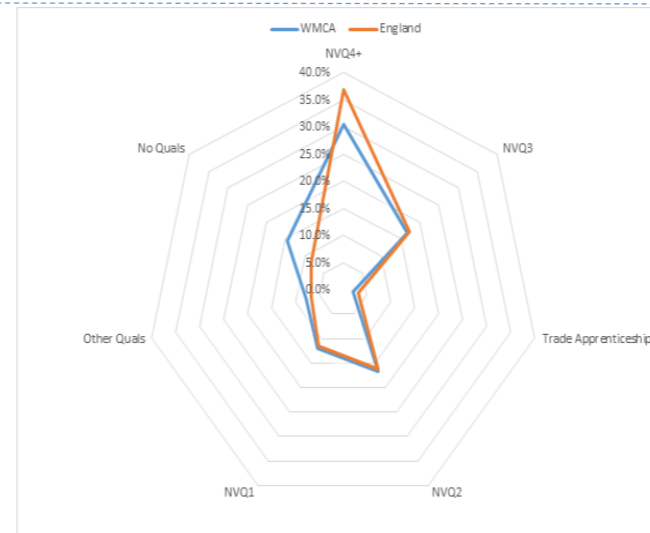


	2012/13	2013/14	2014/15	3 Year % Change 2012/13-2014/15
BCLEP	13,260	11,180	13,170	-0.7%
CWLEP	8,950	7,160	8,550	-4.5%
GBSLEP	20,720	17,670	21,510	3.8%
England	504,200	434,600	494,200	-2.0%

Source: SFA, Statistical First Release, Updated annually in February

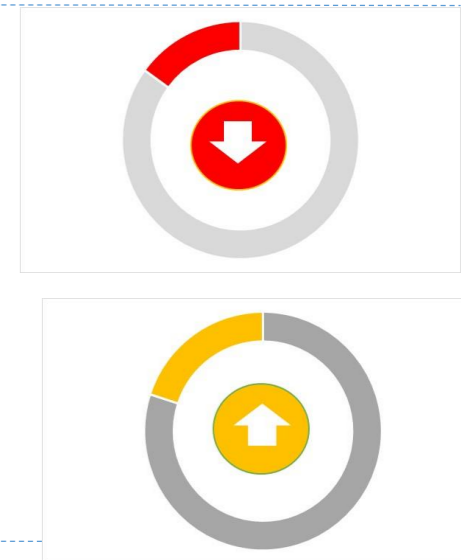
KPI6: Raising Skills

2014	No Quals	NVQ4+
BCLEP	16.7%	23.0%
CWLEP	11.5%	34.7%
GBSLEP	13.6%	29.1%
England	8.6%	35.7%



No quals percentage point reduction 2012-2014 < national average (-.3 vs --.9)

NVQ4+ percentage point increase 2012-2014 similar national average (1.4 vs 1.6)

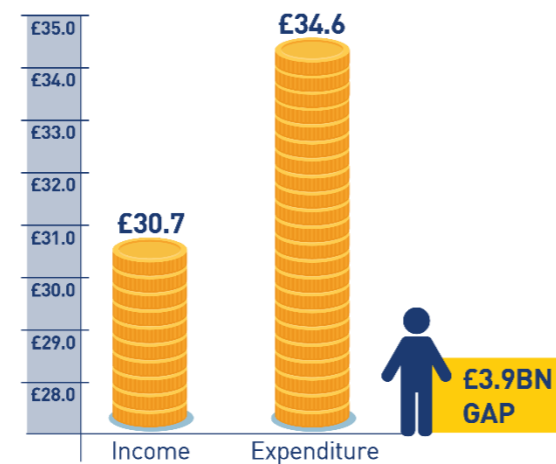


Source: APS, updated annually in July

FISCAL IMPACT

KPI7. Reduce £3.9bn Fiscal Deficit

INCOME AND EXPENDITURE FISCAL OPPORTUNITY



Source: Calculated by BC EIU September 2015

ENVIRONMENTAL IMPACT

KPI8: 40% Reduction in CO2e by 2030

